



## High Barrier Solutions for Monomaterial Packaging

WE GIVE YOU

# The missing link






**Aerolam  
Closures LLP**

701, Shilp Aperia,  
Near Hotel Planet Landmark,  
Near Ashok Vatika-2,  
Ambli-Bopal Road, Bodakdev,  
Ahmedabad - 380054,  
Gujarat, India.

### Contact Details:

-  [www.aerolam.com](http://www.aerolam.com)
-  +91 8200 800 100
-  [support.acl@aerolam.com](mailto:support.acl@aerolam.com)



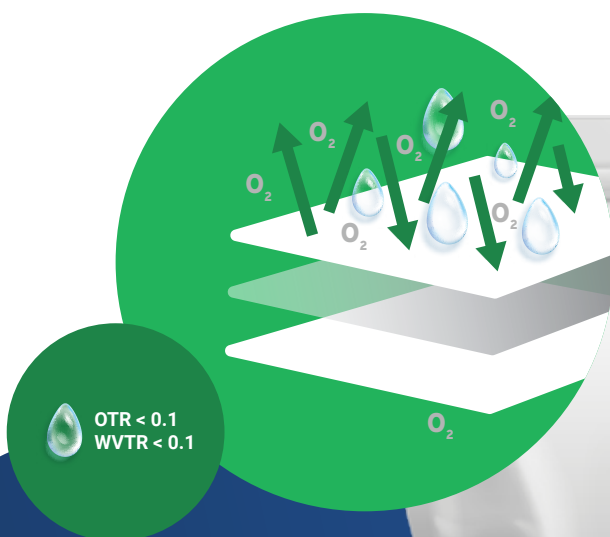
At **Aerolam**, we believe in innovation and invest in cutting-edge research.

Aerolam offers clear and metallised Cast Polypropylene and Cast Polyethylene solutions for flexible packaging.

Thanks to large investments in R&D and state of the art production technologies, Aerolam has created innovative metallised barrier films with enhanced Oxygen and Water Vapour barrier properties.

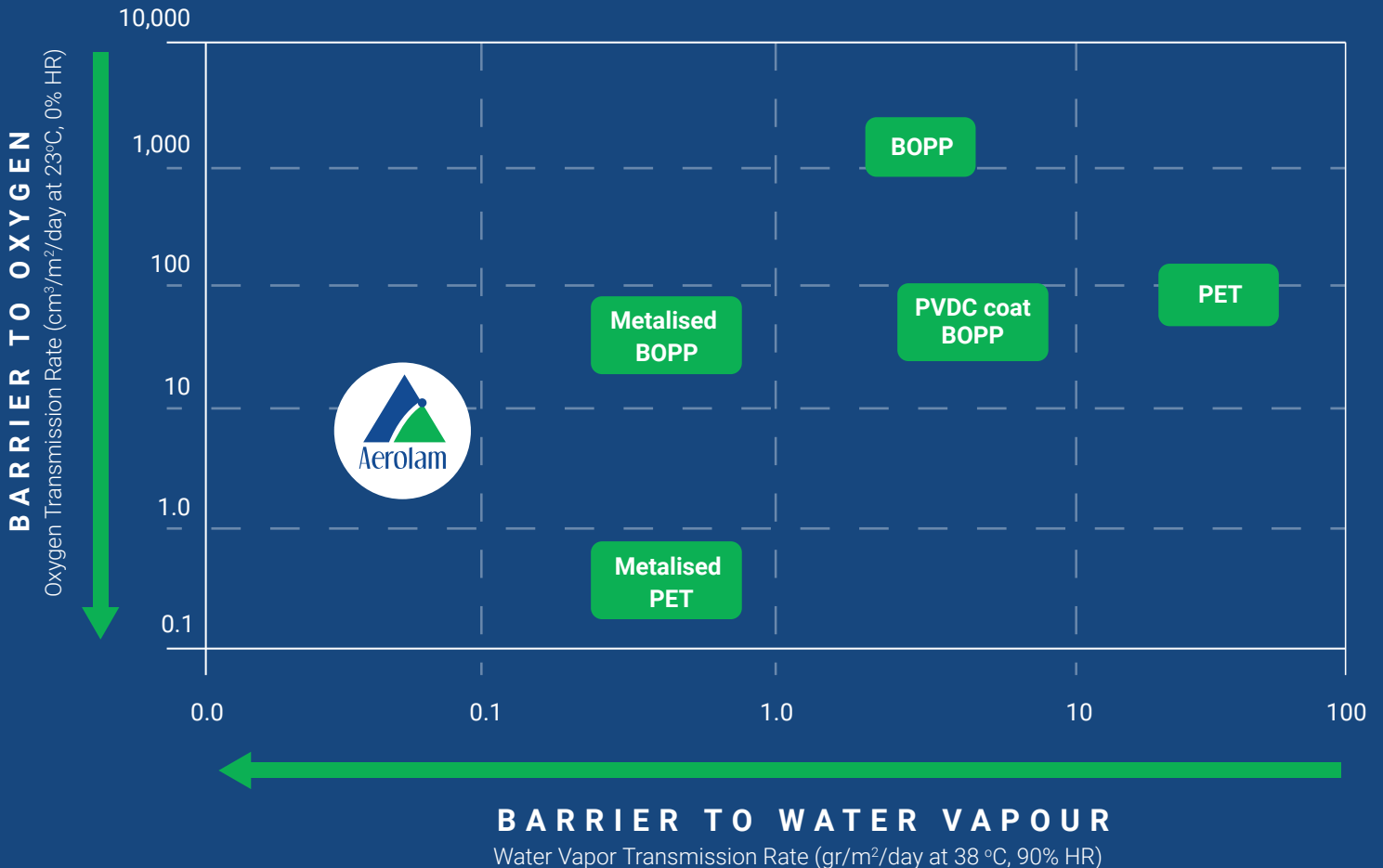
This is the missing link you need to move towards monomaterial packaging and reduce overall plastic waste.

Our new materials offer improved metal adhesion and superior WVTR barrier properties. With these high-quality features, it is also possible to apply an additional oxygen barrier coating to our films. This makes them best-suited for developing monomaterial structures, without use of metallised PET or Aluminium foil.



# Technical Data Sheet

PRODUCT	THICKNESS	BASE	WVTR	OTR	METAL BOND	APPLICATION
CPE MT00HB	20 – 40 mic	Metallised PE	< 0.1	<7	>350gr	Monomaterial PE laminates
CPE MT03HB	20 – 40 mic	Metallised PE	< 0.1	< 7	>350gr	Monomaterial PE laminates
CPP MT02HB	20 – 40 mic	Metallised PP	< 0.1	< 7	>250gr	Monomaterial PP laminates
CPP MT02-15	20 – 40 mic	Metallised PP	< 0.1	< 15	>150gr	Monomaterial PP laminates
CPP MT02KKR	20 – 40 mic	Metallised PP	< 0.1	< 25	>150gr	Monomaterial PP laminates, high puncture resistance





## RP02

### Easy Peel PP - Retort 121°C

- Easy Peel film for very smooth opening of PP cups and Trays.
- High Peel force, smooth opening.
- Opening without angel-hair and retortable to 121°C.

PROPERTIES	METHOD		UNIT	RP02
Thickness	ASTM D-6988		micron	70
Density	ISO 1183		gr/cm <sup>3</sup>	0.905
GSM	ACTM		gr/m <sup>2</sup>	63.35
Yield	ACTM		m <sup>2</sup> /kg	15.78
Seal Temperature for easy peel	ACTM		°C	150 - 170
Peel Strength	ACTM		N/25mm	25 - 30
COF	ASTM D-1894	NT/NT	-	0.50 - 0.70

## Contact Details:



[www.aerolam.com](http://www.aerolam.com)



+91 8200 800 100



[support.acl@aerolam.com](mailto:support.acl@aerolam.com)

## Aerolam Closures LLP

701, Shilp Aperia,  
Near Hotel Planet Landmark,  
Near Ashok Vatika-2,  
Ambli-Bopal Road, Bodakdev,  
Ahmedabad - 380054,  
Gujarat, India.



## MD01

# CPP for Steam Sterilisation Medical Pouches

- CPP for Medical Paper Pouches, Steam sterilisable to 134°C.
- Designed to perform shatterless opening (no frame brake while opening the pouch).
- Designed to perform fiber free opening (no paper fibers lifted from the pouch).
- Standard thicknesses are 30, 38 and 40 micron, in blue, green and clear.

PROPERTIES	METHOD		UNIT	MD01	MD01	MD01
Thickness	ASTM D-6988		micron	30	38	40
Density	ISO 1183		gr/cm <sup>3</sup>	0.905	0.905	0.905
GSM	ACTM		gr/m <sup>2</sup>	27.15	34.39	36.20
Yield	ACTM		m <sup>2</sup> /kg	36.83	29.07	27.62
COF	ASTM D-1894	NT/NT	-	0.20 - 0.30	0.20 - 0.30	0.20 - 0.30
COF	ASTM D-1894	NT/M	-	0.20 - 0.30	0.20 - 0.30	0.20 - 0.30
Tensile Strength	ASTM D-882	MD	kg/cm <sup>2</sup>	500 - 700	500 - 700	500 - 700
Elongation	ASTM D-882	MD	%	600 - 800	600 - 800	600 - 800
Tensile Strength	ASTM D-882	TD	kg/cm <sup>2</sup>	200 - 300	200 - 300	200 - 300
Elongation	ASTM D-882	TD	%	700 - 900	700 - 900	700 - 900

## Contact Details:



[www.aerolam.com](http://www.aerolam.com)



+91 8200 800 100



[support.acl@aerolam.com](mailto:support.acl@aerolam.com)

## Aerolam Closures LLP

701, Shilp Aperia,  
Near Hotel Planet Landmark,  
Near Ashok Vatika-2,  
Ambli-Bopal Road, Bodakdev,  
Ahmedabad - 380054,  
Gujarat, India.



## RT08

# High Impact Retort CPP

- High retortable CPP, high Impact resistance, designed to grant high seal strength after retort at 134°C.
- No odour is passed to the food inside the pouch during retort and aging.
- High bond strength to Nylon and Aluminium foil after lamination, and a superior surface appearance.
- The film is specifically designed for Stand Up and for Pillow Pouches.

PROPERTIES	METHOD		UNIT	RT08	RT08	RT08
Thickness	ASTM D-6988		micron	60	70	80
Density	ISO 1183		gr/cm <sup>3</sup>	0.905	0.905	0.905
GSM	ACTM		gr/m <sup>2</sup>	54.3	63.35	72.4
Yield	ACTM		m <sup>2</sup> /kg	18.42	15.79	13.81
COF	ASTM D-1894	NT/NT	-	0.50 - 0.70	0.50 - 0.70	0.50 - 0.70
Seal Strength	ASTM F88		N/25mm	45	50	50
Tensile Strength	ASTM D-882	MD	kg/cm <sup>2</sup>	500 - 700	500 - 700	500 - 700
Elongation	ASTM D-882	MD	%	1000 - 1300	1000 - 1300	1000 - 1300
Tensile Strength	ASTM D-882	TD	kg/cm <sup>2</sup>	200 - 400	200 - 400	200 - 400
Elongation	ASTM D-882	TD	%	1100 - 1300	1100 - 1300	1100 - 1300

**SEAL CONDITIONS: 180°C 4 bar 1 sec**

## Contact Details:



[www.aerolam.com](http://www.aerolam.com)



+91 8200 800 100



[support.acl@aerolam.com](mailto:support.acl@aerolam.com)

## Aerolam Closures LLP

701, Shilp Aperia,  
Near Hotel Planet Landmark,  
Near Ashok Vatika-2,  
Ambli-Bopal Road, Bodakdev,  
Ahmedabad - 380054,  
Gujarat, India.



## MT02-KKR

### High Barrier - High Puncture Metallised CPP



**Thickness:**  
20 to 40 mic  
**WVTR:** < 0.10  
**OTR:** < 20

- Medium/high barrier metallised CPP.
- High puncture resistance.
- High metal bond (150 gr).
- MT02-KKR has been designed to be able to replace the functions of a metPET in a multi-layer structure allowing the development of monomaterial packaging.

PROPERTIES	METHOD		UNIT	MT02-KKR
Thickness	ASTM D-6988		micron	25
Density	ISO 1183		gr/cm <sup>3</sup>	0.905
GSM	ACTM		gr/m <sup>2</sup>	22.63
COF	ASTM D-1894	NT/M	-	0.40 - 0.60
Puncture Resistance	KS2483:2013	Force at Break	gram	> 200
Puncture Resistance	KS2483:2013	Probe Penetration	mm	> 4
Seal Initiation Temperature	ASTM D-882		°C	105
Optical Density	ACTM		-	2.8
Metal Bond	ACTM		gram	150
WVTR	ASTM F-1249		g/m <sup>2</sup> /day	< 0.1
OTR	ASTM D-3985		cm <sup>3</sup> /m <sup>2</sup> /day	< 20

## Contact Details:



[www.aerolam.com](http://www.aerolam.com)



+91 8200 800 100



[support.acl@aerolam.com](mailto:support.acl@aerolam.com)

## Aerolam Closures LLP

701, Shilp Aperia,  
Near Hotel Planet Landmark,  
Near Ashok Vatika-2,  
Ambli-Bopal Road, Bodakdev,  
Ahmedabad - 380054,  
Gujarat, India.



**Thickness:**  
20 to 40 mic

**WVTR:** < 0.10

**OTR:** < 7

## MT02HB

### High Barrier - High Puncture Metallised CPP

- High barrier metallised CPP.
- High puncture resistance.
- High metal bond (250 gr).

PROPERTIES	METHOD		UNIT	MT02HB
Thickness	ASTM D-6988		micron	25
Density	ISO 1183		gr/cm <sup>3</sup>	0.905
GSM	ACTM		gr/m <sup>2</sup>	22.63
COF	ASTM D-1894	NT/M	-	0.40 - 0.60
Puncture Resistance	KS2483:2013	Force at Break	gram	> 200
Puncture Resistance	KS2483:2013	Probe Penetration	mm	> 4
Seal Initiation Temperature	ASTM D-882		°C	105
Optical Density	ACTM		-	2.8
Metal Bond	ACTM		gram	150
WVTR	ASTM F-1249		g/m <sup>2</sup> /day	< 0.1
OTR	ASTM D-3985		cm <sup>3</sup> /m <sup>2</sup> /day	< 20

## Contact Details:



[www.aerolam.com](http://www.aerolam.com)



+91 8200 800 100



[support.acl@aerolam.com](mailto:support.acl@aerolam.com)

## Aerolam Closures LLP

701, Shilp Aperia,  
Near Hotel Planet Landmark,  
Near Ashok Vatika-2,  
Ambli-Bopal Road, Bodakdev,  
Ahmedabad - 380054,  
Gujarat, India.



**Thickness:**  
**18 to 30 mic**

**WVTR: < 0.10**

**OTR: < 7**



## CPE MT00HB

# High Barrier Metallised CPE

- High barrier metallised CPE designed to be laminated in sandwich between BOPE and PE Seal high metal bond (300 gr) special design for monomaterial packaging.

**BOPE**

**Met CPE**

**PE**



PROPERTIES	METHOD		UNIT	CPE M T00HB	CPE M T00HB
Thickness	ASTM D-6988		micron	20	25
Density	ISO 1183		gr/cm <sup>3</sup>	0.950	0.950
GSM	ACTM		gr/m <sup>2</sup>	19.00	23.75
COF	ASTM D-1894	NT/NT	-	0.30 - 0.50	0.30 - 0.50
COF	ASTM D-1894	NT/M	-	0.15 - 0.30	0.15 - 0.30
Optical Density	ACTM			3.3	3.3
Metal Bond	ACTM			300	300
WVTR	ASTM F-1249		g/m <sup>2</sup> /day	< 0.1	< 0.1
OTR	ASTM D-3985		cm <sup>3</sup> /m <sup>2</sup> /day	< 7	< 7

## Contact Details:



[www.aerolam.com](http://www.aerolam.com)



+91 8200 800 100



[support.acl@aerolam.com](mailto:support.acl@aerolam.com)

## Aerolam Closures LLP

701, Shilp Aperia,  
Near Hotel Planet Landmark,  
Near Ashok Vatika-2,  
Ambli-Bopal Road, Bodakdev,  
Ahmedabad - 380054,  
Gujarat, India.



**Thickness:**  
18 to 30 mic

**WVTR: < 0.10**

**OTR: < 7**



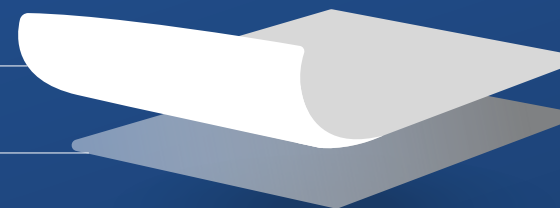
## CPE MT03HB

# High Barrier Metallised CPE - Heat Sealable

- High barrier metallised CPE heat sealable.
- SIT from 95°C.
- High metal bond (300 gr).
- Special design for monomaterial packaging.

BOPE

Met CPE



PROPERTIES	METHOD		UNIT	CPE MT03HB
Thickness	ASTM D-6988		micron	25
Density	ISO 1183		gr/cm <sup>3</sup>	0.905
GSM	ACTM		gr/m <sup>2</sup>	22.63
COF	ASTM D-1894	NT/NT	-	0.30 - 0.50
COF	ASTM D-1894	NT/M	-	0.15 - 0.30
Seal Initiation Temperature	ASTM D-882		°C	95
Optical Density	ACTM			3.3
Metal Bond	ACTM			300
WVTR	ASTM F-1249		g/m <sup>2</sup> /day	< 0.1
OTR	ASTM D-3985		cm <sup>3</sup> /m <sup>2</sup> /day	< 7

## Contact Details:



[www.aerolam.com](http://www.aerolam.com)



+91 8200 800 100



[support.acl@aerolam.com](mailto:support.acl@aerolam.com)

## Aerolam Closures LLP

701, Shilp Aperia,  
Near Hotel Planet Landmark,  
Near Ashok Vatika-2,  
Ambli-Bopal Road, Bodakdev,  
Ahmedabad - 380054,  
Gujarat, India.